

Infinite K2263

KnollTextiles

KT Collection affordable modern design

Primary Use

Upholstery
Wrapped acoustical panels

Content

Polyester 100%

Width

54 inches

High Performance

100,000+ double rubs

Environmental

Clean Air GOLD

Note

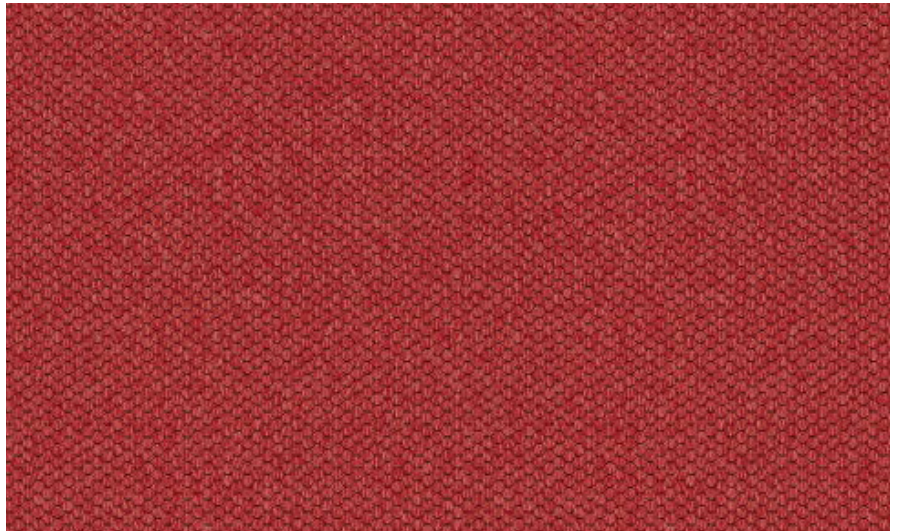
Fabric shown railroaded



K2263/1 Sugar



K2263/2 Husk



K2263/13 Poppy



K2263/3 Natural



K2263/4 Calm



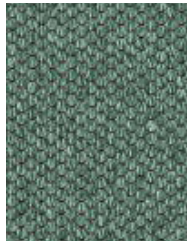
K2263/5 Honeycomb



K2263/6 Copper



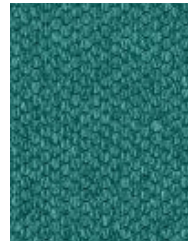
K2263/7 Celery



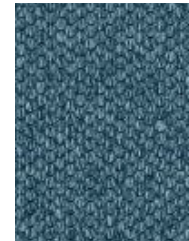
K2263/8 Eucalyptus



K2263/9 Hillside



K2263/10 Feather



K2263/11 Raindrop



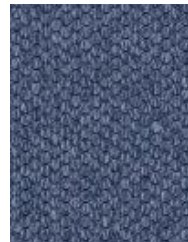
K2263/12 Pepper



K2263/13 Poppy



K2263/14 Wisteria



K2263/15 Blueberry



K2263/16 Midnight



K2263/17 Birch



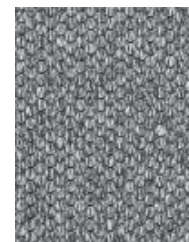
K2263/18 Stonework



K2263/19 Nutmeg



K2263/20 Acorn



K2263/21 Mercury



K2263/22 Gunmetal

| | |
|-------------------------|--|
| Name | Infinite KT Collection |
| Style Number | K2263 |
| Primary Use | Upholstery Wrapped wall panels |
| Content | Polyester 100% |
| Finish | Soil and stain repellent |
| Weight | 9 oz. per linear yard |
| Width | 54 inches |
| Flame Resistance | NFPA 260 (UFAC Class 1) ASTM E-84 (unadhered) Class A |
| Lightfastness | AATCC 16E, 40 hours, Class 4.5 |
| Abrasion | 100,000+ double rubs, Wyzenbeek method Multiple factors affect fabric durability and appearance retention, including end-user application and proper maintenance. Wyzenbeek results above 100,000 double rubs have not been shown to be a reliable indicator of increased fabric lifespan. |
| Maintenance | W-S: Clean with water or solvent based cleaning agent |
| Custom | Custom colors available with a minimum of 1320 yards. Additional charges or lead times may be required. |
| Environmental | This fabric is certified Clean Air GOLD for low VOC emissions and may contribute to LEED®, WELL Building, and Living Building Challenge certification. |
| Note | Fabric shown railroaded. Subtle variations in texture are an inherent characteristic of this product. |

